

Name \_\_\_\_\_

# Evil Quiz

## Linear Equations

1. In the table below, give the generic formula for each form of a linear Equation.

Form of Linear Equation	Generic Formula
Standard Form	
Slope-Intercept Form	
Point-Slope Form	

**For problems 2-7, write the equation for a line in the given form according to the specifications.**

2. Slope-Intercept Form  
Passes through (5, 8) and (-2, -6)

5. Standard Form  
 $m=5$ ,  $b=20$

3. Slope-Intercept Form

x	y
1	18
2	15
3	12
4	9

6. Point-Slope Form  
Passes through (-3, 5)  
Slope of -2

4. Standard Form  
Passes through (0, 5) and (-3, 0)

7. Point Slope Form  
Passes through (8, 9) and (4, -7)

8. Fill in the chart below for a line that passes through the points (-2, 9) and (1, 0):

Form of Linear Equation	Equation
Standard Form	
Slope-Intercept Form	
Point-Slope Form	

For problems 9-12, graph the line on the attached graph paper.

9.  $4x - 12y = 12$

11.  $y = -\frac{1}{2}x - 1$

10.  $y = \frac{3}{4}x - 4$

12.  $y + 3 = 2(x + 2)$

For problems 13-16, give the two quantities for each linear equation.

13.  $y = \frac{5}{3}x + 27$

15.  $2x + 6y = 24$

slope =

x-intercept =

y-intercept =

y-intercept =

14.  $y + 6 = \frac{2}{7}(x - 9)$

16.  $y - 1 = -5(x - 11)$

slope =

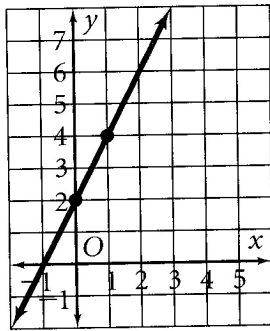
slope =

passes through what point?

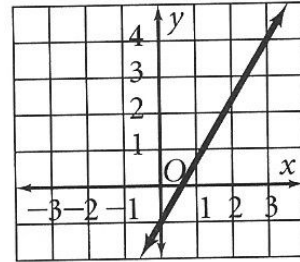
passes through what point?

For problems 17-20, write the equation for the line in each graph. Choose whatever form is easiest for you.

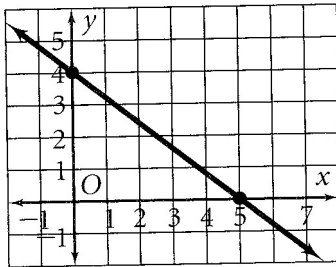
17.



19.



18.



20.

